



AquaStream

Barrier Free, Two Station, Cast Iron Wall Mounted Drinking Fountain

SUGGESTED SPECIFICATIONS

Model A112J00S is a wall mounted, vandal resistant two (2) station drinking fountain made from cast iron with a white enamel coated finish. Unit shall be activated by side mounted, self-closing push button valves, by using less than 5 pounds of force. Internally mounted adjustable stream regulators shall control the water flow. Bubblers shall be stainless steel with non-squirt features and operate on water pressure range of 20-105 psig. Unit shall adhere to ANSI A117.1 and Americans with Disabilities Act of 1990 frontal approach and protruding objects requirements, **Child ADA** parallel and frontal approach and ANSI/NSF 61, Section 9.

□ **Standard Model:**
A112J00S



STANDARD FEATURES

- Both Child and Adult ADA Compliant (when properly installed)
- Resistant to sunlight, heat, moisture and wear
- White enamel coated cast iron
- Polished stainless steel, lead-free, anti-rotation non-squirt bubblers
- 100 mesh inlet strainer
- Vandal resistant galvanized steel bottom plate and screws
- P-trap, 1-1/4" O.D.



Member of
U.S. Green
Building
Council



Recyclable
Product



Water
Conserving
Product

OPTIONAL ACCESSORIES (additional costs)

- - PB Push button activation on bubblers

Acorn Aqua™ assumes no responsibility for use of void or suspended data. © Copyright 2009 Acorn Aqua™, City of Industry, CA, A Division of Acorn Engineering Company. Please visit www.acornaqua.com for most current specifications.

Submittal # **A112J00S**
11/20/09

COMPLIES WITH
STANDARDS



Member of Acorn
Family of Companies

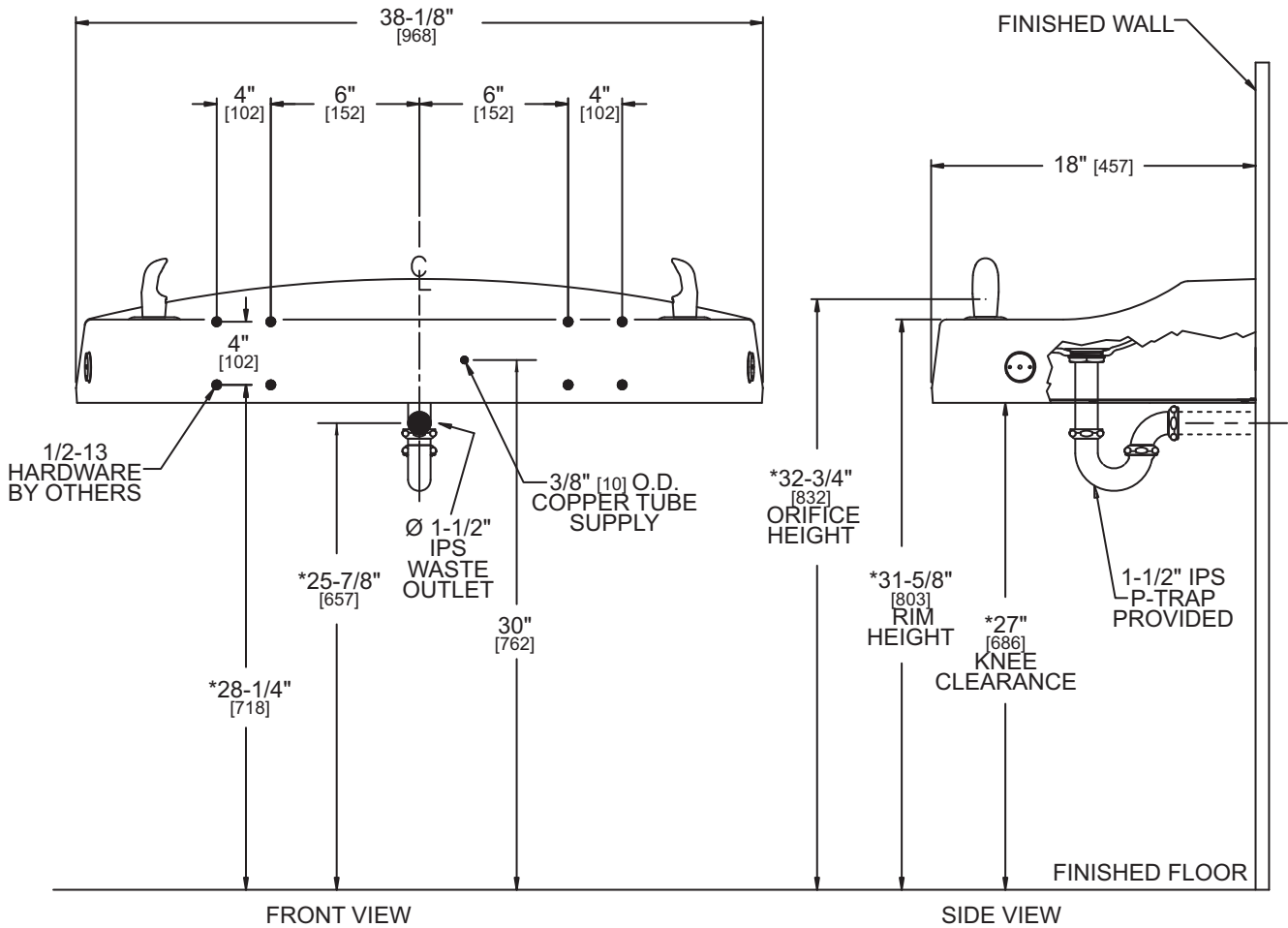
ACORN AQUA
15125 Proctor Avenue
City of Industry, CA
91746 U.S.A.
Phone 800-591-9360
626-336-4561
Fax 626-855-4894
www.acornaqua.com



TECHNICAL DIMENSIONS

All dimensions are nominal and subject to manufacturer's change without notice. Acorn Aqua™ assumes no responsibility for use of void or suspended data. © 2009 Acorn Aqua™, a Division of Acorn Engineering Company. Please visit www.acornaqua.com for most current specifications.

Standard Model:
A1I2J00S



GENERAL NOTES:

1. ALL DIMENSIONS ARE IN INCHES [MM]
- *2. DIMENSIONS SHOWN ARE FOR RECOMMENDED ADULT HEIGHT, ADJUST VERTICAL DIMENSIONS AS NECESSARY TO COMPLY WITH FEDERAL, STATE & LOCAL CODES.
3. STOP VALVE NOT PROVIDED

AquaStream Barrier Free, Two Station,
Cast Iron Wall Mounted Drinking Fountain

Rough-in # **A1I2J00S** 11/20/09

Five Year Limited Warranty- (Continental United States and Canada Only) The following components are warranted for five years: Compressor, Condenser Coil and Refrigeration Coil. The following components shall only be warranted for a period of one year: Evaporator Can Assembly, Thermostat, Fan Motor, Cartridge, Push Buttons, Compressor Starting Relay/Overload/Capacitor and Activation Linkage. Other parts are warranted for one (1) year from date of installation.
Limited Export Warranty- One (1) year on parts only.

SELECTION SUMMARY & APPROVAL FOR MANUFACTURING

Model Number & Options _____ Quantity _____

Company _____

Contact _____ Title _____

Signature (Approval for Manufacturing) _____ Date _____



800-591-9360
626-336-4561
www.acornaqua.com